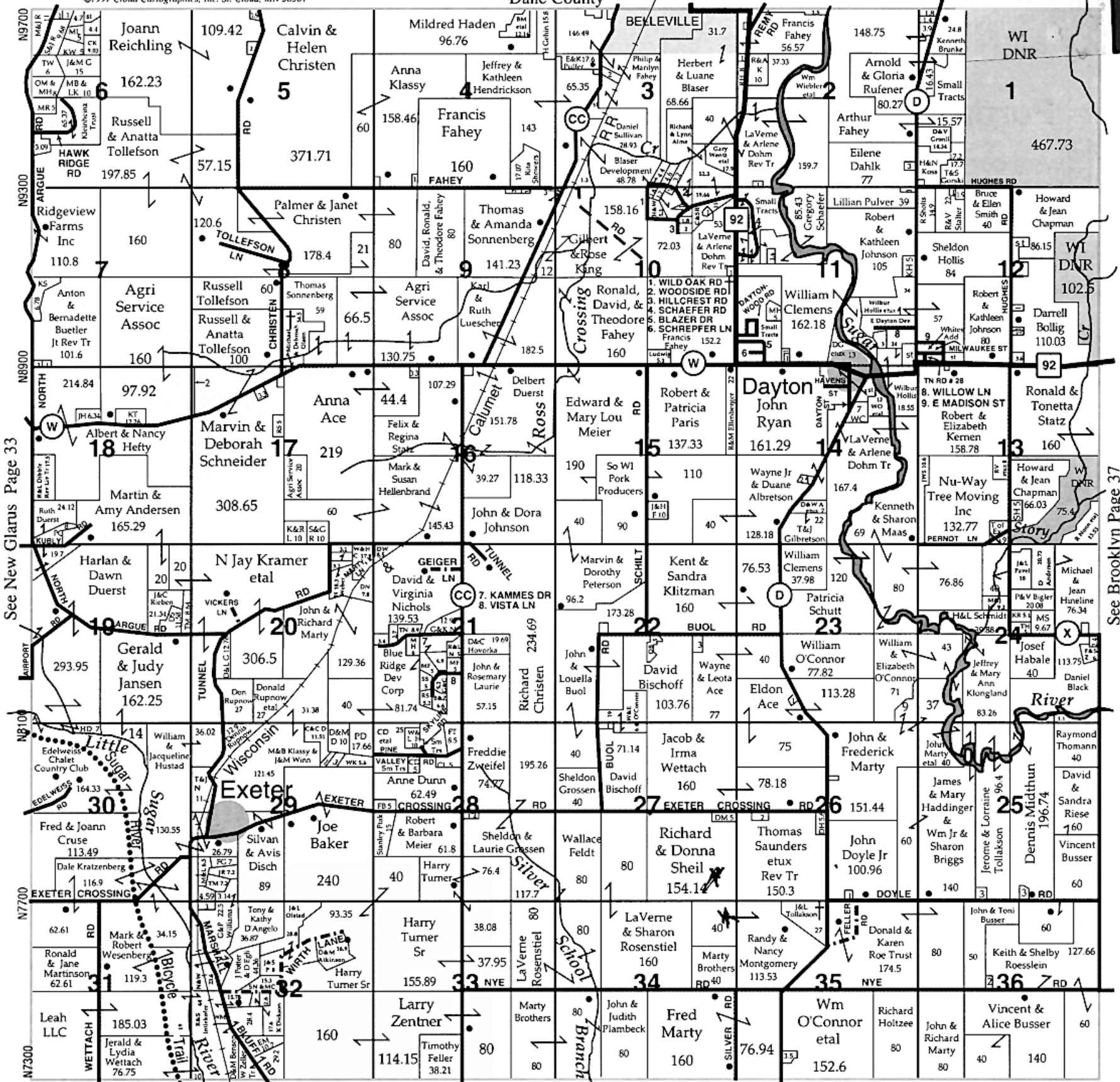




©1997 Cloud Cartographics, Inc. St. Cloud, MN 56301

Dane County



See New Glarus Page 33

See Brooklyn Page 37

N9700  
N9300  
N8900  
N8500  
N8100  
N7700  
N7300

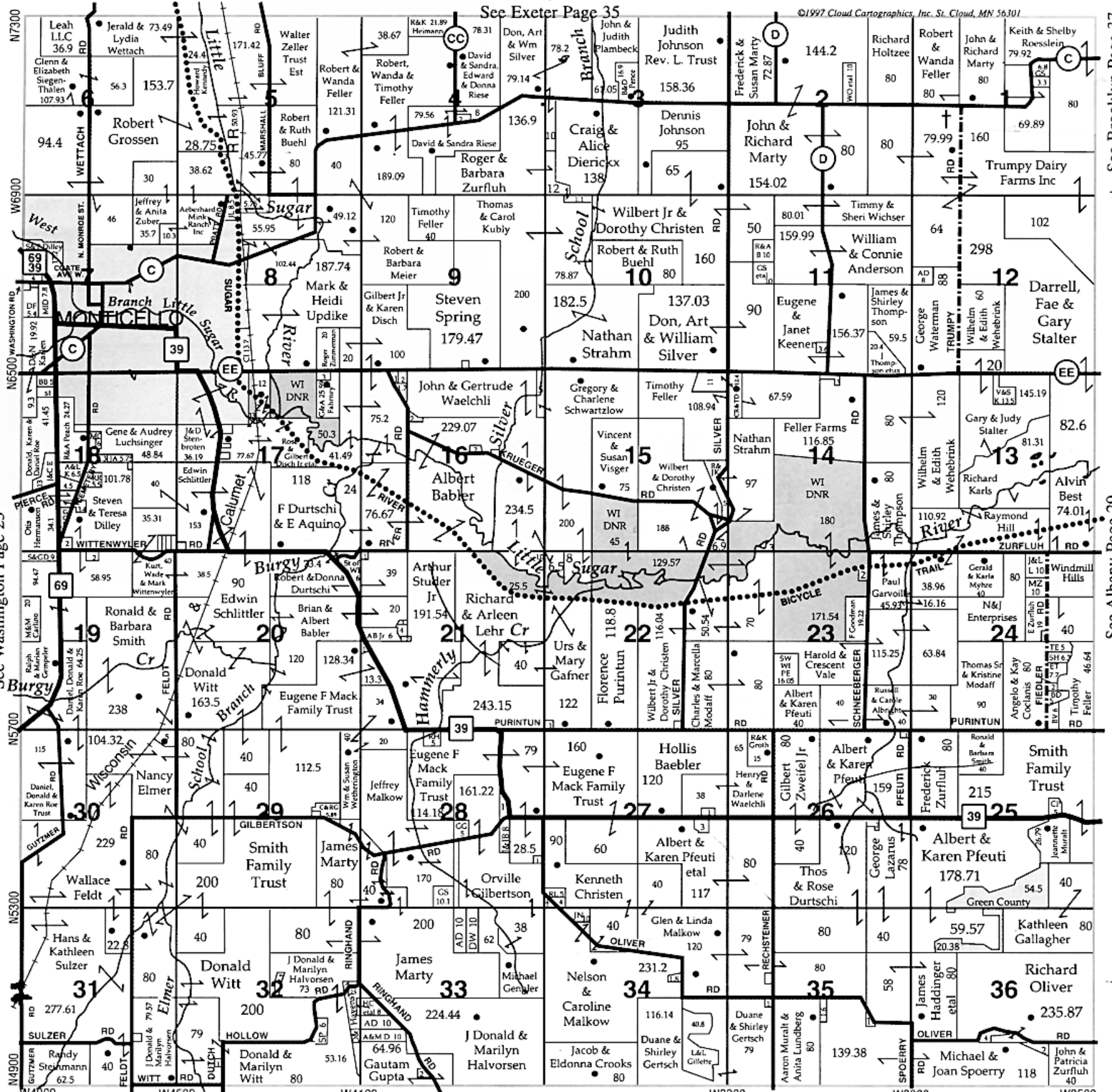
WI DNR  
WI DNR  
WI DNR  
WI DNR  
WI DNR  
WI DNR  
WI DNR

Joann Reichling 162.23  
Calvin & Helen Christen 371.71  
Mildred Haden 96.76  
Anna Kassy 158.46  
Francis Fahey 160  
Jeffrey & Kathleen Hendrickson 143  
Anna Ace 44.4  
Marvyn & Deborah Schneider 219  
Gerald & Judy Jansen 162.25  
N Jay Kramer et al 306.5  
Joe Baker 240  
Larry Zentner 114.15  
Fred Marty 160  
Wm O'Connor et al 152.6  
Vincent & Alice Busser 140



See Exeter Page 35

©1997 Cloud Cartographics, Inc., St. Cloud, MN 56301



See Brooklyn Page 37

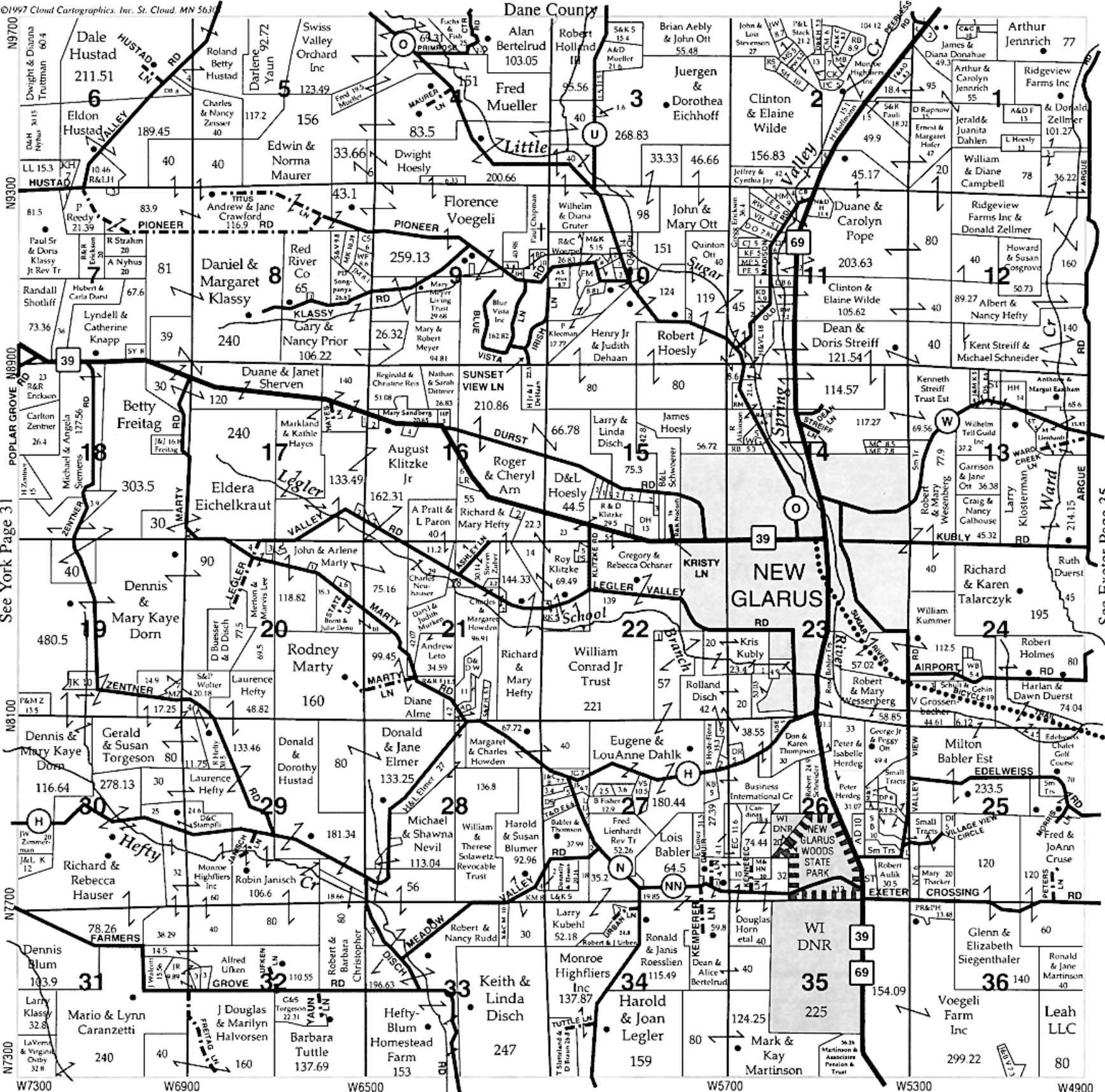
See Albany Page 29

See Washington Page 25

See Sylvester Page 21



Dane County



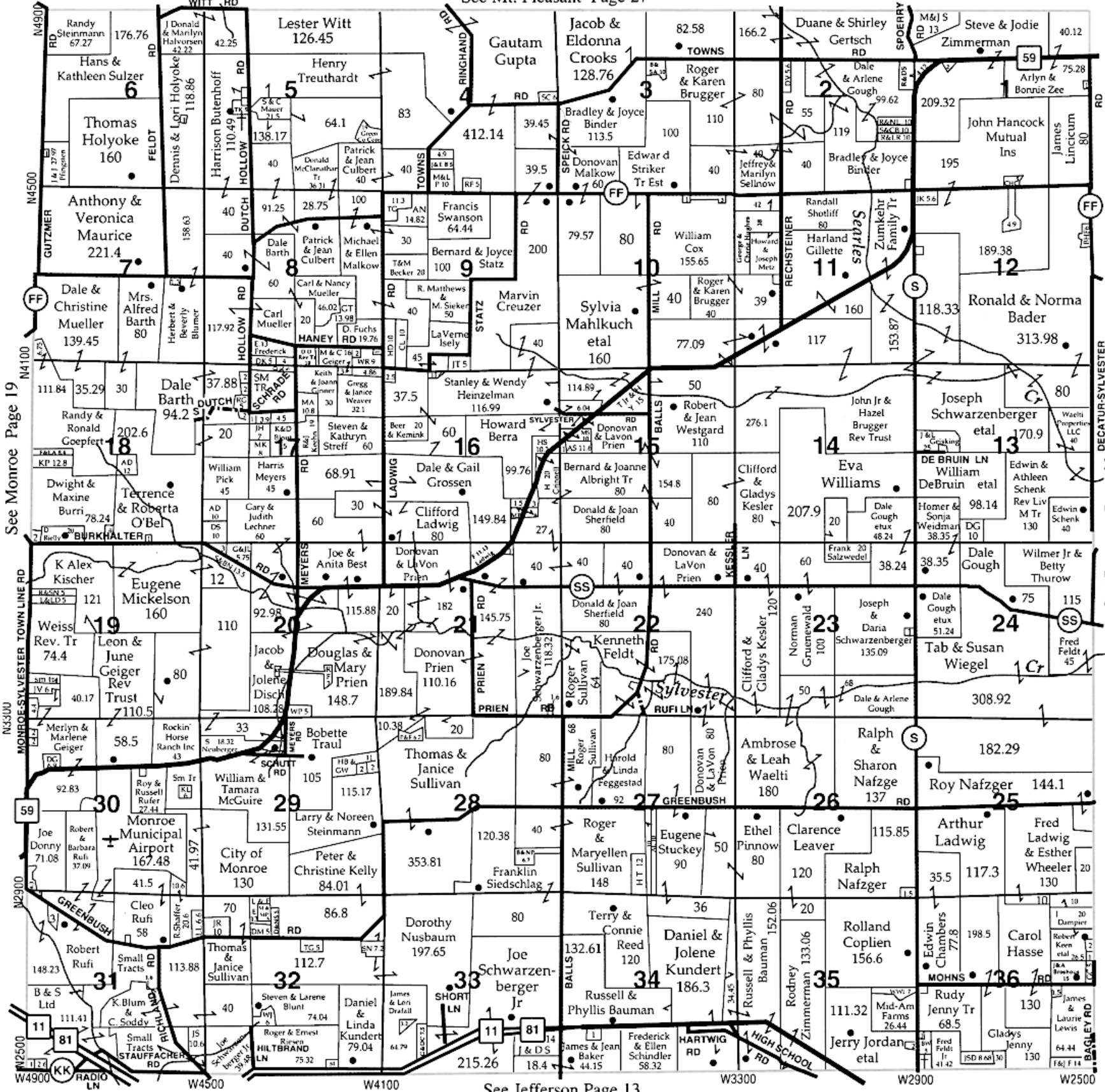
N9700  
N9300  
N8900  
N8500  
N8100  
N7700  
N7300

W7300  
W6900  
W6500  
W5700  
W5300  
W4900



©1997 Cloud Cartographics, Inc. St. Cloud, MN 56301

See Mt. Pleasant Page 27



See Monroe Page 19

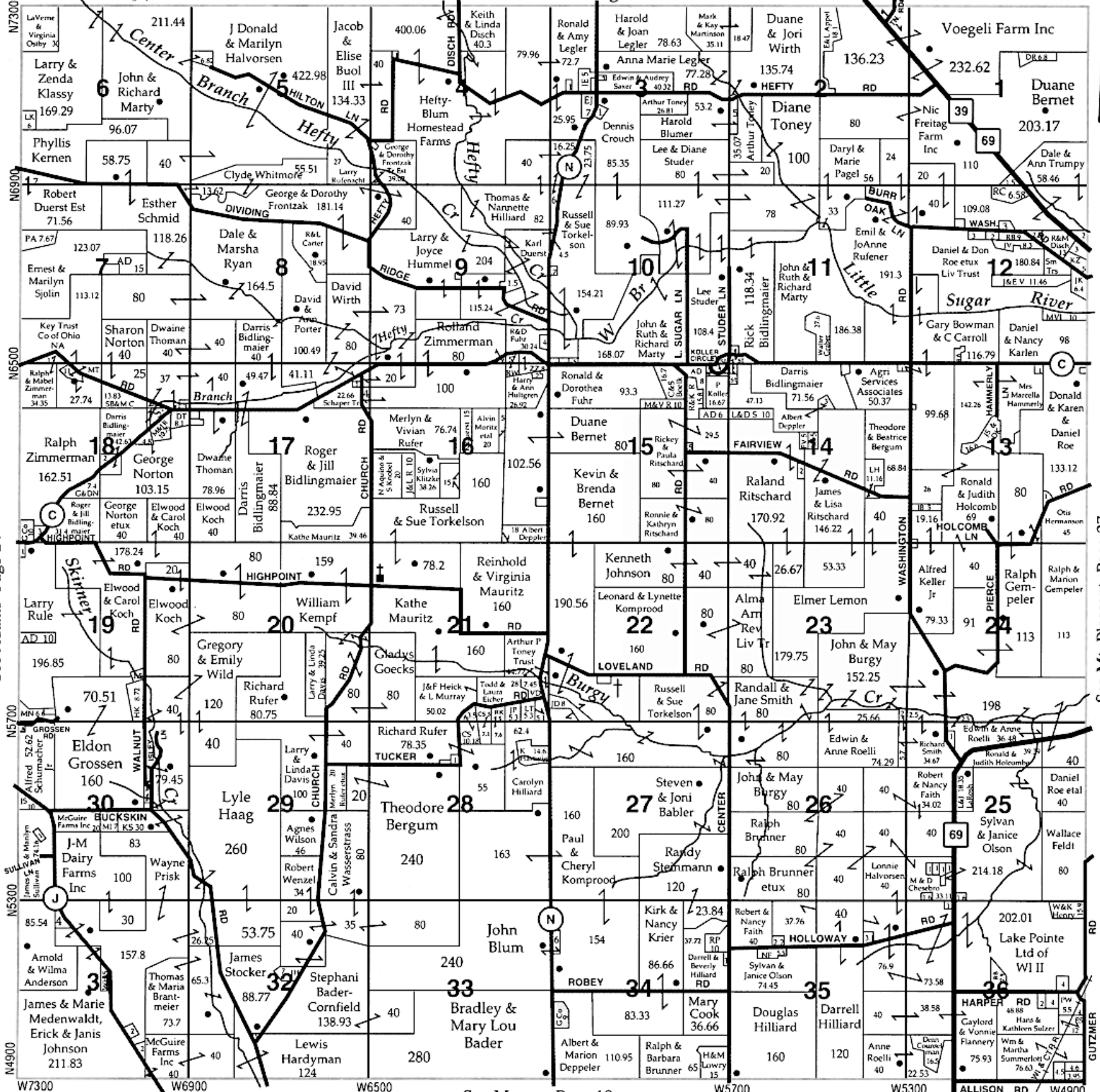
See Decatur Page 23

See Jefferson Page 13



©1997 Cloud Cartographics, Inc. St. Cloud, MN 56301

See New Glarus Page 33



See Adams Page 24

See Mt. Pleasant Page 27

See Monroe Page 19

GUTZMER